



Eastern Mediterranean Region

Aryballos

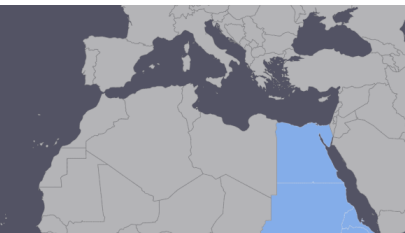
Late 600—early 500 BCE

Glass, Core-forming

Gallery 401, Cabinet B4

Accession #: 0000.1692

Aryballos: “a flask or bottle that has a short neck, single handle, small orifice with a flaring lip, and globular body often elaborately decorated and that is used for holding oils or ointments — compare alabastrum.” — Merriam-Webster



Eastern Mediterranean Region

Amphoriskos

Late 600— early 500 BCE

Glass, Core-forming

Gallery 401, Cabinet B4

Accession #: 1928.4710

Amphoriskos —> Amphora: “an anciet Greek jar or vase with a large oval body, narrow cylindrical neck, and two handles that rise almost to the level of the mouthbroadly : such a jar or vase used elsewhere in the ancient world”



Egypt

Osiris

Bronze

Ptolemaic Period; 305-30 BCE

Gallery 401, Cabinet A3

Accession #: 1928.2692

Osiris is an Egyptian god originally connected with fertility, brother-husband of Isis and father of Horus. He is killed by his brother Seth, but later resurrected; becomes ruler of the afterlife. Osiris is the “Latinized form of the Egyptian Usir which is interpreted as ‘powerful’ or mighty’... Images of Osiris as a living god depict him as... wearing the crown of Upper Egypt.”

Crown of Upper Egypt



Egypt

Ushabti (funerary sculpture)

Earthenware, glazing

Gallery 401, Cabinet B4

Accession #: 1928.3104



Hawazma Peoples

Kadugli, Kurdufān (present-day Southern Kordofan), Sudan; made in China

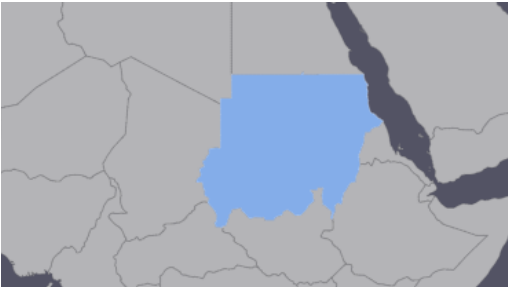
Two Bracelets

1983-1984

Plastic

Gallery 405 (20/21), Drawer 4

Accession #: 2007.0847.01.2



Hawazma Peoples

Khartoum, Al Kharṭoum, Sudan

Hijab (men’s amulet)

1983-1984

Leather

Gallery 405 (20/21), Drawer 3

Accession #: 2007.0862





**Zulu Peoples**

Union of South Africa (present-day South Africa)

*Pair of Beaded Anklets*

180-1965

Beads

Gallery 405 (20/21), Drawer 4

Accession #: 2007.0912.a,b



**Maasai Peoples**

Kenya

*Pair of Men's ear ornaments*

1850-1958

Beads, Wire

Gallery 405 (20/21), Drawer 4

Accession #: 2007.0918.a,b



**Kongo Peoples**

Loango Coast, French Congo (present-day Republic of the Congo)

*Carved Ivory Tusk*

1895-1905

Ivory, Pigment, Carving

Gallery 401

Accession #: 2007.1814



**Egypt**

*Isis and the Infant Horus*

C. 300 BCE, Ptolemaic Kingdom, 332 BCE — 30 CE

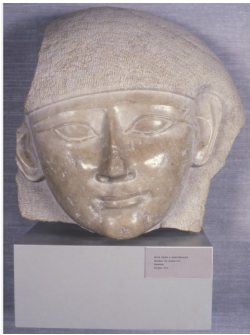
Bronze Wood

Gallery 401

Accession #: 1956.0029

Isis is an Egyptian nature goddess and is the wife and sister of Osiris

Horus is the falcon-headed Egyptian god of light and the son of Isis and Osiris



**Egypt**

*Head from a Sarcophagus*

C. 300 BCE, Ptolemaic Period, 330—30 BCE

Limestone

Gallery 401

Accession #: 1962.0006



**Egypt**

*Hunting Scene*

Limestone relief

Gallery 401

Accession #: 1977.0033





Egypt

Wadjet Amulet (Eye of Horus)

1990-1975

Faience

Gallery 401

Accession #: 1996.0027



Oyo Peoples

North Oyo, Nigeria

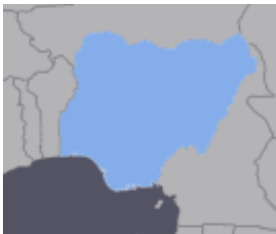
Ere ibeji (twin figure)

1850-1975

Wood, pigment, metal, carving

Kress Gallery

Accession #: 2007.2684



Oyo Peoples

Nigeria

Ere ibeji (Twin Figure)

1900-1975

Wood, beads, camwood powder, indigo, metal

Kress Gallery

Accession #: 2007.2682

Ere Ibeji sculptures are created after the death of a twin as a place for the spirit of the deceased twin to inhabit. They are carved to look like the adult version of the child and are ceremoniously feed, clothed, and are given gifts. This is done to ensure that the deceased twin does not get jealous, or else it could take the life of the living twin.



Oyo Peoples

North Oyo, Nigeria

Ere ibeji (twin figure)

1850-1975

Wood, pigment, beads, carving

Kress Gallery

Accession #: 2007.26585



Oyo Peoples

North Oyo, Nigeria

Ere ibeji (twin figure)

1850-1975

Wood, pigment, metal, carving

Kress Gallery

Accession #: 2007.2683



Oyo Peoples

North Oyo, Nigeria

Ere ibeji (twin figure)

1850-1975

Wood, indigo, pigment, metal, carving

Kress Gallery

Accession #: 2007.2686







Ondo Peoples (probably)

Nigeria

Ere ibeji (twin figure)

1850-1975

Wood, cord, metal, carving

Kress Gallery

Accession #: 2007.2687



Oyo Peoples

North Oyo, Nigeria

Ere ibeji (twin figure)

1850-1975

Wood, pigment, metal, carving

Kress Gallery

Accession #: 2007.2690



Oyo Peoples

South Oyo, Nigeria

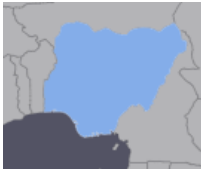
Ere ibeji (twin figure)

1850-1975

Wood, pigment, carving

Kress Gallery

Accession #: 2007.2688



Oyo Peoples

North Oyo, Nigeria

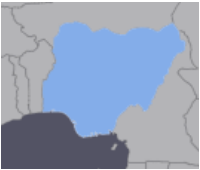
Ere ibeji (twin figure)

1850-1975

Wood, pigment, beads, string, carving

Kress Gallery

Accession #: 2007.2691



Oyo Peoples

South Oyo, Nigeria

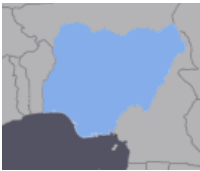
Ere ibeji (twin figure)

1850-1975

Wood, pigment, metal, carving

Kress Gallery

Accession #: 2007.2689



Oyo Peoples

South Oyo, Nigeria

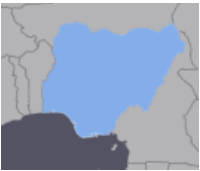
Ere ibeji (twin figure)

180-1975

Wood, metal, carving

Kress Gallery

Accession #: 2007.2692







**Oyo Peoples**

North Oyo, Nigeria

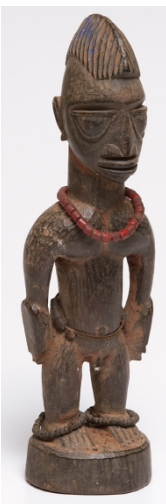
*Ere ibeji (twin figure)*

1850-1975

Wood, pigment, beads, metal, carving

Kress Gallery

Accession #: 2007.2693



**Ondo Peoples**

Nigeria

*Ere ibeji (twin figure)*

1850-1975

Wood, pigment, beads, string, carving

Kress Gallery

Accession #: 2007.2696



**Oyo Peoples**

North Oyo, Nigeria

*Ere ibeji (twin figure)*

1850-1975

Wood, pigment, metal, carving

Kress Gallery

Accession #: 2007.2694



**Oyo Peoples**

North Oyo, Nigeria

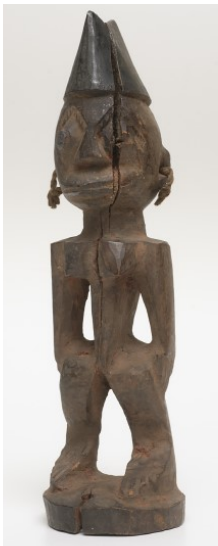
*Ere ibeji (twin figure)*

1850-1975

Wood, pigment, carving

Kress Gallery

Accession #: 2007.2697



**Ondo Peoples**

East Oyo, Nigeria

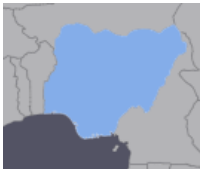
*Ere ibeji (twin figure)*

1850-1975

Wood, pigment, string, metal, carving

Kress Gallery

Accession #: 2007.2695



**Ondo Peoples**

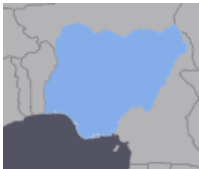
Nigeria

*Ere ibeji (twin figure)*

1850-1975

Wood, pigment, carving

Accession #: 2007.2698





Ondo Peoples

Nigeria

Ere ibeji (twin figure)

1850-1975

Wood, pigment, beads, carving

Kress Gallery

Accession #: 2007.2699



Oyo Peoples

North Oyo, Nigeria

Ere ibeji (twin figure)

1850-1975

Wood, pigment, carving

Kress Gallery

Accession #: 2007.2702



Ondo Peoples

Nigeria

Ere ibeji (twin figure\_

1850-1975

Wood, pigment, carving

Kress Gallery

Accession #: 2007.2700



Ondo Peoples

Nigeria

Ere ibeji (twin figure)

1850-1975

Wood, pigment, carving

Kress Gallery

Accession #; 2007.2703



Oyo Peoples

Central Oyo, Nigeria

Ere ibeji (twin figure)

1850-1975

Wood, pigment, beads, carving

Kress Gallery

Accession #: 2007.2701



Oyo Peoples

North Oyo, Nigeria

Ere ibeji (twin figure)

1850-1975

Wood, pigment, carving

Kress Gallery

Accession #: 2007.2704





**Oyo Peoples**

North Oyo, Nigeria

*Ere ibeji (twin figure)*

1850-1975

Wood, pigment, carving

Kress Gallery

Accession #: 2007.2705



**Oyo Peoples**

Central Oyo, Nigeria

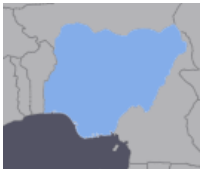
*Ere ibeji (twin figure)*

1850-1975

Wood, pigment, carving

Kress Gallery

Accession #: 2007.2708



**Oyo Peoples**

Central Oyo, Nigeria

*Ere ibeji (twin figure)*

1850-1975

Wood, pigment, carving

Kress Gallery

Accession #; 2007.2706



**Oyo Peoples**

South Oyo, Nigeria

*Ere ibeji (twin figure)*

1850-1975

Wood, pigment, carving

Kress Gallery

Accession #: 2007.2709



**Oyo Peoples**

Central Oyo, Nigeria

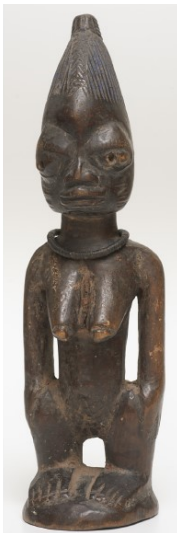
*Ere ibeji (twin figure)*

1850-1975

Wood, pigment, metal, carving

Kress Gallery

Accession #: 2007.2707



**Oyo Peoples**

North Oyo, Nigeria

*Ere ibeji (twin figure)*

1850-1975

Wood, pigment, beads, carving

Kress Gallery

Accession #: 2007.2710







**Oyo Peoples**

Central Oyo, Nigeria

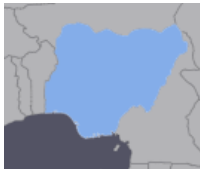
*Ere ibeji (twin figure)*

1850-1975

Wood, pigment, metal, carving

Kress Gallery

Accession #; 2007.2711



**Ondo Peoples**

Nigeria

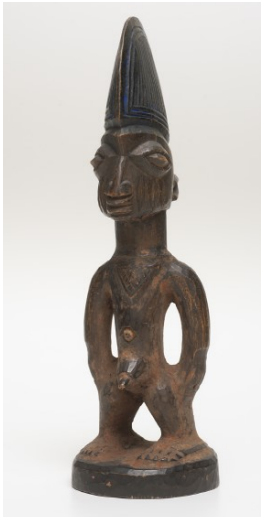
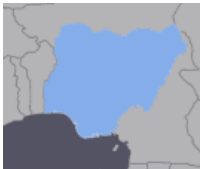
*Ere ibeji (twin figure)*

1850-1975

Wood, pigment, carving

Kress Gallery

Accession #; 2007.2714



**Oyo Peoples**

Central Oyo, Nigeria

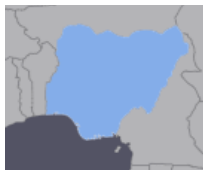
*Ere ibeji (twin figures)*

1850-1975

Wood, pigment, carving

Kress Gallery

Accession #; 2007.2712



**Oyo Peoples**

North Oyo, Nigeria

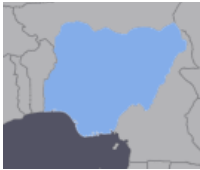
*Ere ibeji (twin figure)*

1850-1975

Wood, carving

Kress Gallery

Accession #; 2007.2715



**Oyo Peoples**

Central Oyo, Nigeria

*Ere ibeji (twin figure)*

1850-1975

Wood, pigment, cowrie shells, strings, carving

Kress Gallery

Accession #: 2007.2713



**Yoruba Peoples**

Nigeria

*Ere ibeji (twin figures)*

1925-1975

Wood, cotton, carving, dyeing

Kress Gallery

Accession #: 2007.2716

To learn more about *Ere ibeji* figures in Yoruba culture:  
<https://www.khanacademy.org/humanities/art-africa/west-africa/nigeria/a/ere-ibeji-figures-yoruba-peoples>





**Yoruba Peoples**

Nigeria

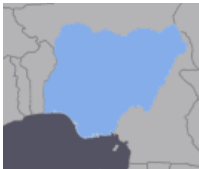
*Ere ibeji (twin figure)*

1925-1975

Wood, cotton, carving, dyeing

Kress Gallery

Accession #: 2007.2717



**Yoruba Peoples**

Nigeria

*Ere ibeji (twin figures)*

1850-1969

Wood, pigment, beads, metal, carving

Kress Gallery

Accession #: 2007.2720



**Yoruba Peoples**

Nigeria

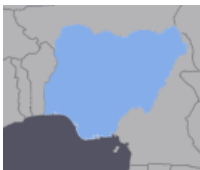
*Ere ibeji (twin figures)*

1850-1975

Wood, pigment, beads, carving

Kress Gallery

Accession #: 2007.2718



**Yoruba Peoples**

Nigeria

*Ere ibeji (twin figure)*

1850-1993

Wood, beads, metal, carving

Kress Gallery

Accession #: 2007.2721



**Yoruba Peoples**

Nigeria

*Ere ibeji (twin figure)*

1850-1975

Wood, beads, carving

Kress Gallery

Accession #: 2007.2719



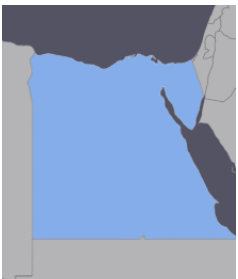
**Egypt**

*Ring with Blue Scarab*

Faience, silver

Gallery 401, Cabinet B4

Accession #: 2006.0306





**Rhodesia (present-day Zimbabwe)**

*British South Africa Company Medallion*

1897

Bronze Casting

Gallery 401, Drawer 4

Accession #: 2007.0181



**Asante Peoples**

Ashantiland (present-day Ghana)

*Nsodie (funerary portrait)*

1800-1899

Ceramic

Gallery 401

Accession #: 2007.2875



**Congo (present-day Democratic Republic of Congo)**

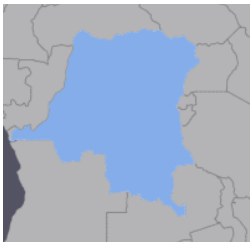
*Vase of Water Jar*

1925-1975

Ceramic

Kress Gallery

Accession #: 2007.0775



**Asante Peoples**

Ashantiland (present-day Ghana)

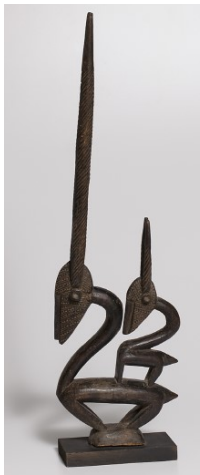
*Nsodie (funerary portrait)*

1700-1799

Ceramic

Gallery 401

Accession #: 2007.2877



**Bamana Peoples**

Mali

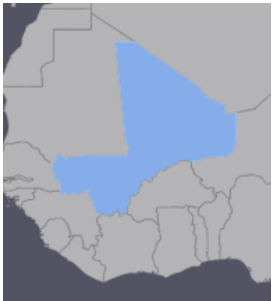
*Chi Wara Headdress*

1900-1975

Wood, Staining, Carving

Gallery 406

Accession #: 2007.2805



**Bassa Peoples (possibly)**

Liberia

*Sowe Mask*

1925-1999

Wood, pigment, palm oil, carving

Gallery 401

Accession #: 2007.2922







**Ife Peoples**

Southwestern Nigeria

*Portrait Head*

1925-1975

Ceramic, incising

Gallery 401

Accession #: 2007.3111



**Asante Peoples**

Ghana

*Balance for Gold Dust*

1850-1950

Brass, string

Gallery 401, Cabinet E3

Accession #: 2007.3391.01



**Africa**

*One of a set of three bracelets*

1850-2007

Plant Fiber, weaving

Gallery 405 (20/21), Drawer 3

Accession #: 2007.3312.03



**Asante Peoples**

Ghana

*Spoon for Gold Dust*

1850-1950

Brass, stamping

Gallery 401, Cabinet E3

Accession #: 2007.3391.02



**Zulu Peoples**

Union of South Africa (present-day South Africa)

*Ear Spool*

1850-1965

Wood, paint

Gallery 405 (20/21), Drawer 3

Accession #: 2007.3326



**Asante Peoples**

Ghana

*Weight*

1850-1950

Brass

Gallery 401, Cabinet E3

Accession #: 2007.3391.04





**Asante Peoples**

Ghana

*Weight*

1850-1950

Brass

Gallery 401, Cabinet E3

Accession #: 2007.3391.09



**Asante Peoples**

Ghana

*Weight*

1850-1950

Brass

Gallery 401, Cabinet E3

Accession #: 2007.3391.30



**Asante Peoples**

Ghana

*Weight*

1850-1950

Brass

Gallery 401, Cabinet E3

Accession #: 2007.3391.11



**Asante Peoples**

Ghana

*Weight*

1850-1950

Brass

Gallery 401, Cabinet E3

Accession #: 2007.3391.44



**Asante Peoples**

Ghana

*Weight*

1850-1950

Brass

Gallery 401, Cabinet E3

Accession #: 2007.3391.20



**Asante Peoples**

Ghana

*Weight*

1850-1950

Brass

Gallery 401, Cabinet E3

Accession #: 2007.3391.46







**Asante Peoples**

Ghana

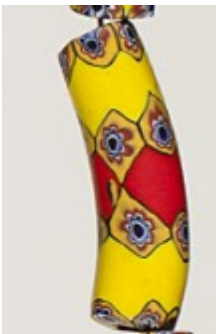
*Weight*

1850-1950

Brass, lead

Gallery 401, Cabinet E3

Accession #: 2007.3391.51



**Africa**

*Necklace*

1850-1981

Beads, metal, string

Gallery 405 (20/21), Drawer 4

Accession #: 2007.3406



**Hausa Peoples**

Nigeria

*Cuff Bracelet*

1850-1975

Metal, stamping, incising

Gallery 405 (20/21), Drawer 2

Accession #: 2007.3393



**Hausa-Fulani Peoples**

Kano, Nigeria

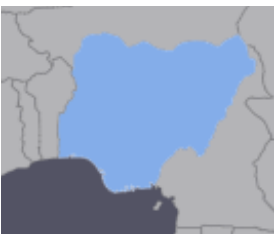
*Beads made from Recycled Glass*

1980

Glass, cotton

Gallery 405 (20/21), Drawer 4

Accession #: 2011.0171



**Africa**

*Cuff Bracelet*

1850-1975

Metal

Gallery 405 (20/21), Drawer 2

Accession #: 2007.3398



**JP Mika**

Democratic Republic of the Congo

*Les personnalités qui ont marqué l'histoire de la RDC (The Personalities who have Shaped the History of the DRC [Democratic Republic of Congo])*

2010

Paint on Canvas

Gallery 405 (20/21)

Accession #: 2013.0052







**JP Mika**

Democratic Republic of the Congo

*Tralala de la vie quotidienne (The Tralala of Everyday Life)*

2013

Paint on Canvas

Gallery 405 (20/21)

Accession #: 2013.0053



**Kassena Peoples**

*Burkina Faso or Ghana*

1925-1975

Ceramic, incising

Gallery 406

Accession #: PG2008.050.a,b



**Mouscou**

Democratic Republic of the Congo

*Match des personnes handicapées Africa & Europe  
(Match of African and European Handicapped People)*

2013

Paint on canvas

Gallery 405 (20/21),

Accession #: 2013.0059



**Mohau Modisakeng**

*Passage*

2017

Three-channel HD video; 18:49 minutes

Kemper Balcony

Accession #: EL2018.089